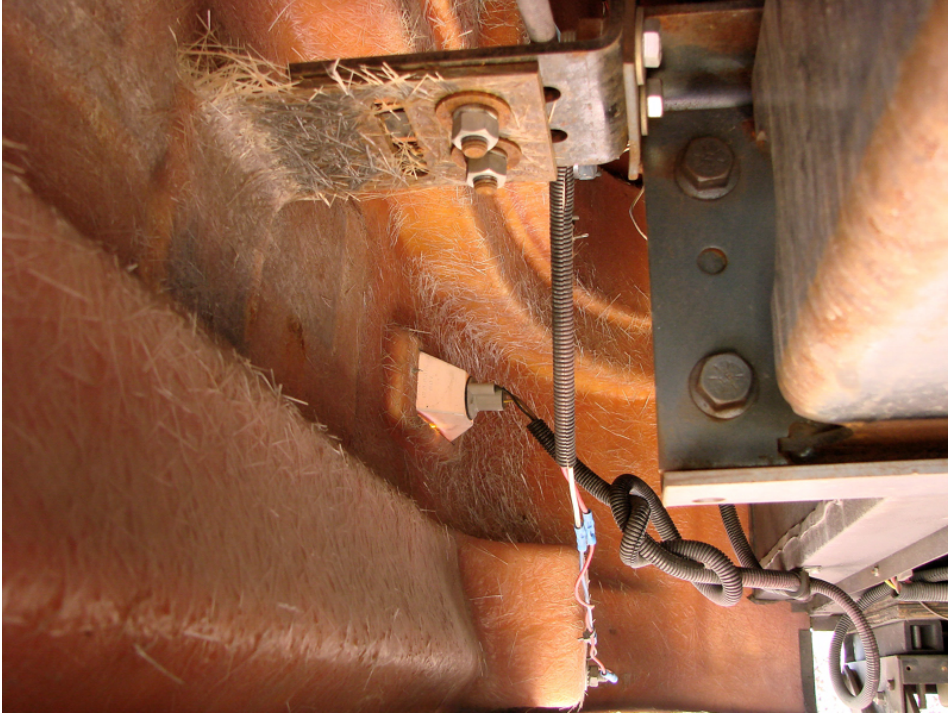


Safari Sahara Front Bumper

In browsing around my Sahara, a 1998 M3044, I have noticed that the front bumper is nothing more than a bulge in the fiberglass of the front cap. If we happened to hit something with this, not only would the “bumper” be destroyed, but possibly all of the lower half of the cap including the headlights. I would hate to miss the balance of a trip for a fender bender.



Above is a shot before I added my bumper backing. It is about 8” from the fiberglass to the end of the frame.



The “kit” after I fabricated the parts.

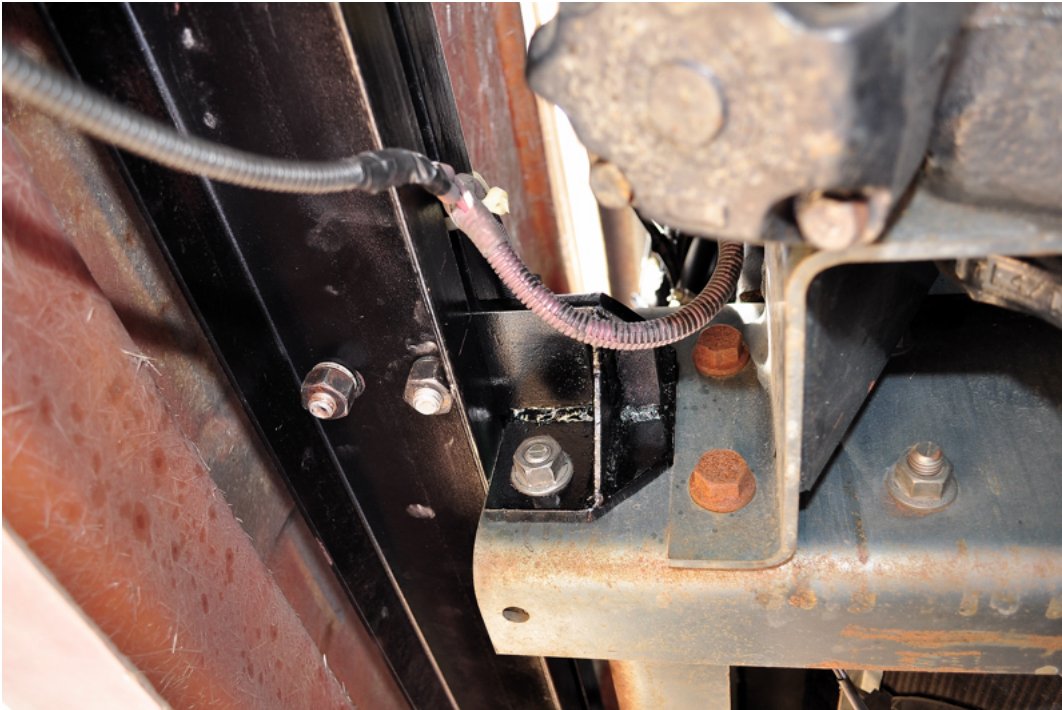
Safari Sahara Front Bumper



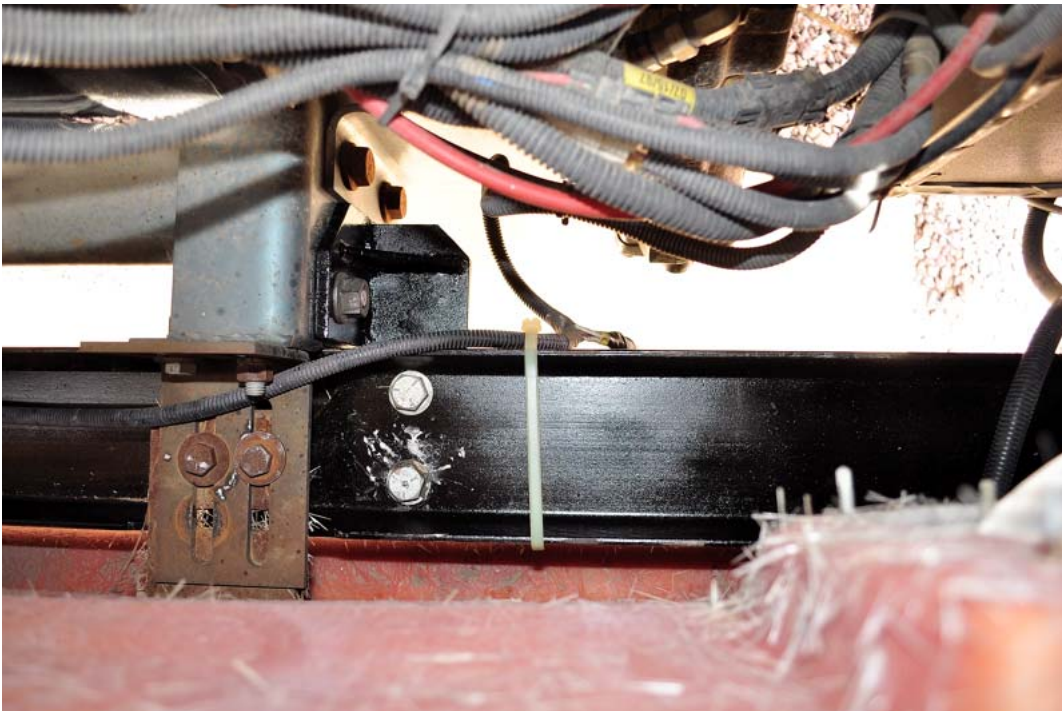
A view of the channel in place looking right to left. It is about 3" from the front of the channel to the fiberglass. I plan to cut some oak blocks to fill the space with about 1/4" clearance to the fiberglass. I will use long 3/8" lag screws and washers through the gap between the channels to hold the blocks in place.

With the coach being tail heavy from the factory, this will add about 130 pounds as far forward as possible which should help the balance of the coach.

Safari Sahara Front Bumper

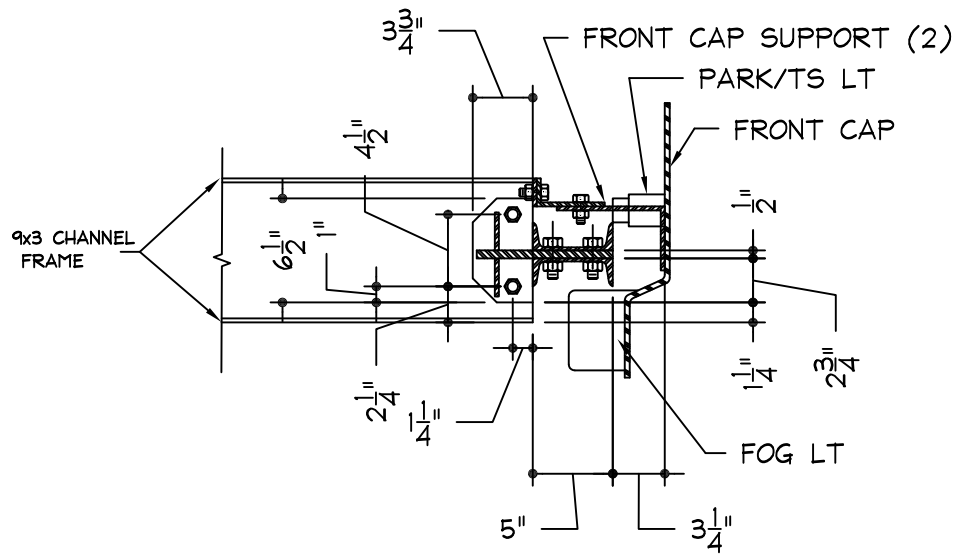


A close up of the bracket on the left side forward of the steering box mount.

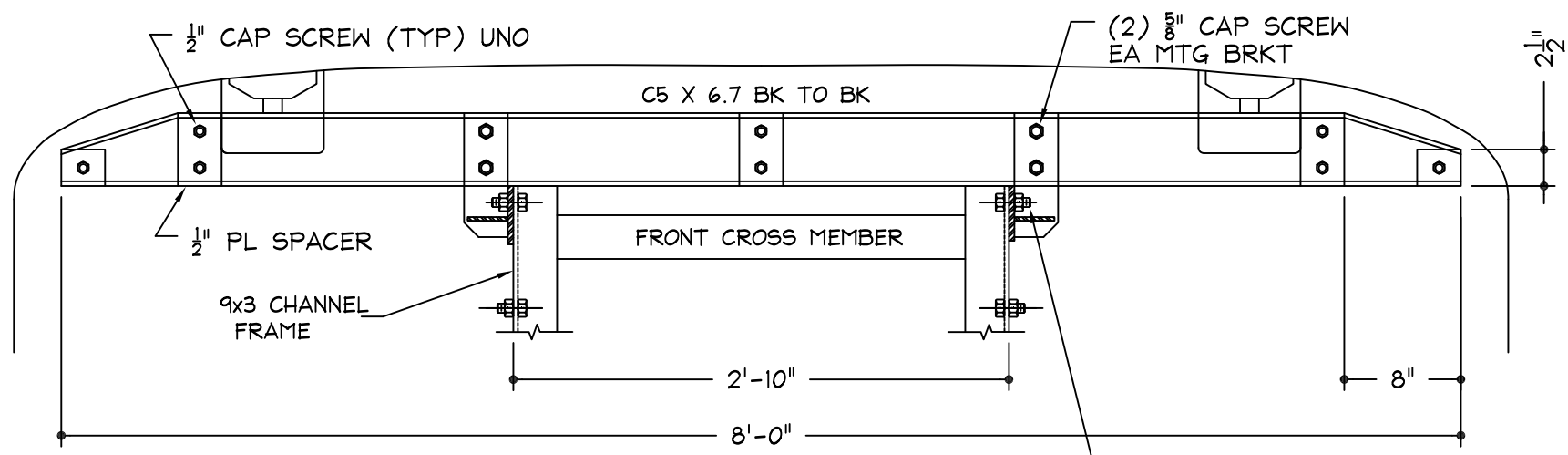


Top view looking down through the hood opening.

C:\ACAD\DRAWINGS\SAFARI FRONT BUMPER.DWG 05/05/09 6:11:55 PM



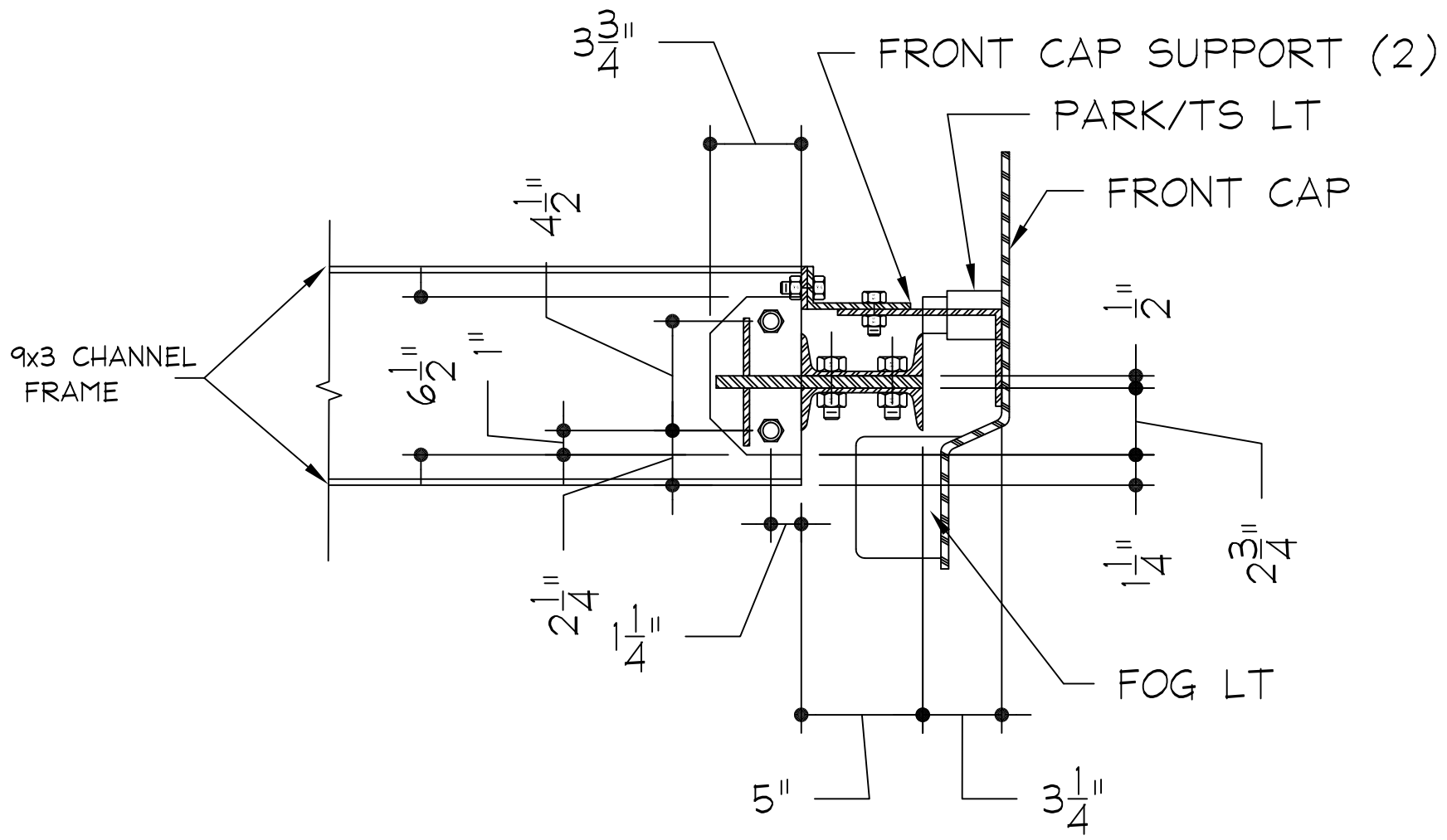
SECTION @ FRAME



PLAN VIEW

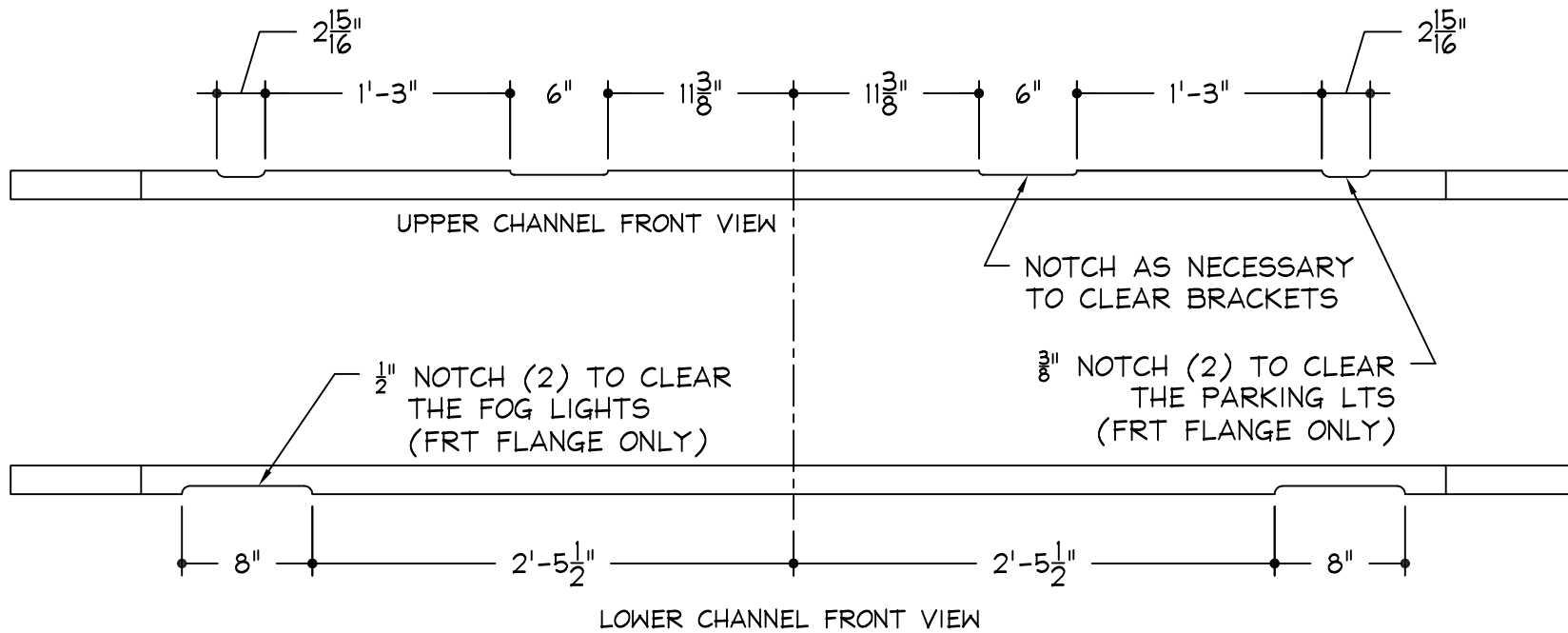
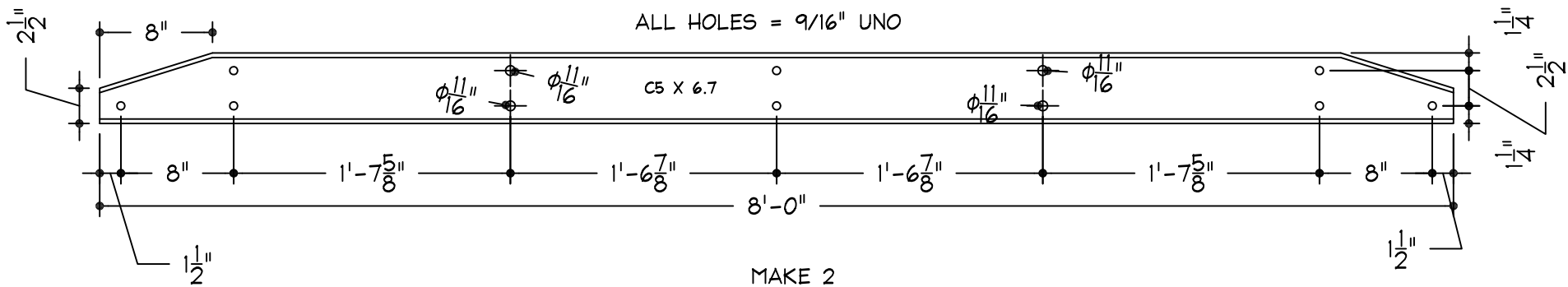
SCALE: 1"=1'-0"	PROJECT: SAFARI MOTORHOME	TITLE: SAFARI BUMPER BACKING	REVISION
DRAWN: JIM X	LOC: CAMARILLO, CA	DRG: SBB-1	0
DATE: 3/12/09	JOB NO: N/A	Safari Front Bump.dwg	

05/05/09 6:11:31 PM C:\ACAD\DRAWINGS\SAFARI FRONT BUMP.DWG



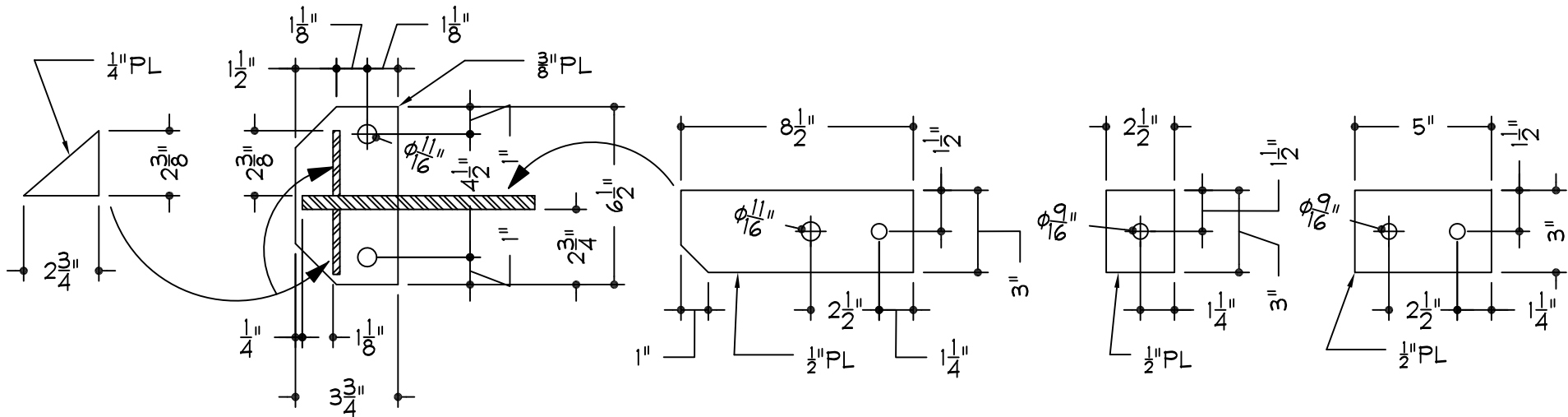
SECTION @ FRAME

SCALE:N/A	PROJECT:SAFARI MOTORHOME	TITLE:SAFARI BUMPER BACKING	REVISION
DRAWN:JIM X	LOC: CAMARILLO, CA	DRG: SBB-2	0
DATE: 3/12/09	JOB NO:N/A	Safari Front Bump.dwg	



05/05/09 6:11:09 PM C:\ACAD\DRAWINGS\SAFARI FRONT BUMP.DWG

SCALE: N/A	PROJECT: SAFARI MOTORHOME	TITLE: SAFARI BUMPER BACKING	REVISION
DRAWN: JIM X	LOC: CAMARILLO, CA	DRG: SBB-3	0
DATE: 3/18/09	JOB NO: N/A	Safari Front Bump.dwg	



GUSSET PL
MAKE 4

FRAME PL
MAKE 2

BRACKET
MAKE 2

SPACER
MAKE 2

SPACER
MAKE 3

NOTES:

1. BEFORE DRILLING CHANNELS, MOUNT THE BRACKETS AND CHECK THE HOLE SPACING. LEAVE ALL BOLTS HAND TIGHT UNTIL THE LAST STEP.
2. WHILE THE BRACKETS ARE MOUNTED, YOU CAN USE A STRAIGHT EDGE TO CHECK FOR INTERFERENCES AND WHERE NOTCHES ARE NEEDED.
3. FOR FINAL ASSEMBLY, PUT THE TOP CHANNEL INTO PLACE AND BLOCK UP OFF THE FOG LIGHT BOXES. NEXT, MOUNT THE BRACKETS AND LET THE TOP CHANNEL DOWN TO REST ON THEM. NOW PUT THE LOWER CHANNEL IN PLACE AND AGAIN BLOCK IT OFF THE FOG LIGHT BOXES.
4. INSTALL THE SPACER PLATES.
5. TIGHTEN ALL THE BOLTS INSURING EVERYTHING IS LINED UP.

SCALE:N/A	PROJECT:SAFARI MOTORHOME	TITLE:SAFARI BUMPER BACKING	
DRAWN:JIM X	LOC:CAMARILLO, CA	DRG: SBB-4	REVISION
DATE:3/18/09	JOB NO:N/A		0
Safari Front Bump.dwg			

05/05/09 6:10:41 PM C:\ACAD\DRAWINGS\SAFARI FRONT BUMPER.DWG